


NOTES:

1. APPLICABLE DOCUMENTS:
A. FSI-SSD 7.1.1.1-1993
B. ANSI Y14.5M-1982
2. INSTALL ALL FASTENERS PER FSI-SSD DOCUMENT 7.1.3.1-6.
3. REMOVE ALL BURRS AND SHARP EDGES
R .02 MAX OR 45 DEG X .02 MAX.

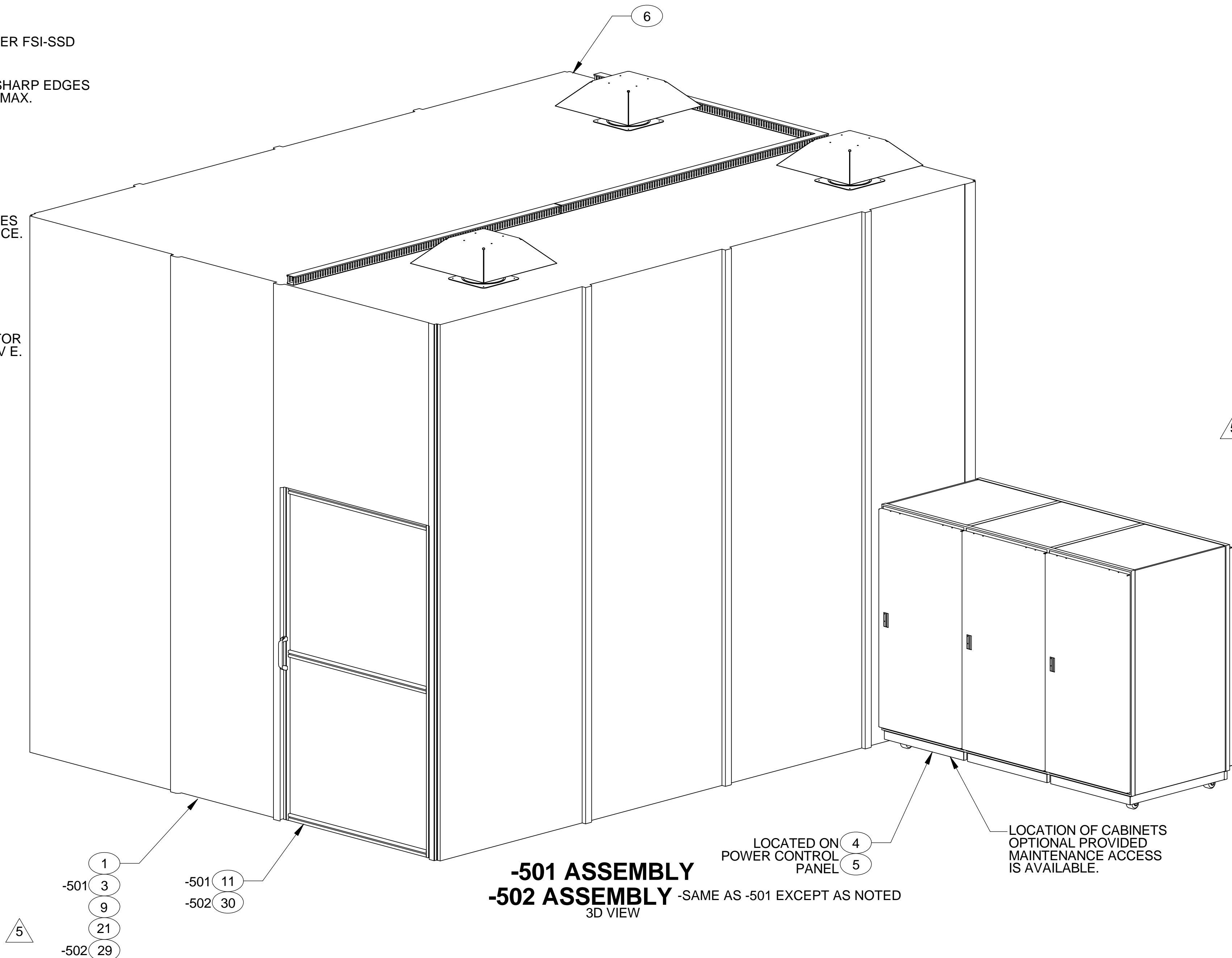
 TWO TECHNOLOGIES, INC
419 SARGON WAY
HORSHAM, PA 19044
PHONE: 215-441-5305
FAX: 215-441-0423

5 TUBING TO BE USED ON THE FRONT COCKPIT CABLES FOR COSMETIC APPEARANCE.

 LOCATE APPROXIMATELY
AS SHOWN.

 USED BUT NOT SHOWN


8. -501 ASSEMBLY INACTIVE FOR FUTURE DESIGN AS OF REV E. TABLE BELOW LISTS IFT'S WITH DRI CONTROLS.
-502 EPRO SYSTEM REPLACES DRI SYSTEM.

[illegible]

PARTS LIST CONT. ON SHEET 2

1	1	02929	06WX8493	SOCKET SURFACE 6/6 WAY	NEWARK	25
5	5		.250-28UNF-3A X .750 LG	BOLT, HEX HEAD	.250-28UNF-3A X .750 LG CARBON STEEL, CADMIUM PLATED	24
5	5		.250 ID	WASHER, FLAT	.250 ID CARBON STEEL, CADMIUM PLATED	23
5	5		.250 ID	WASHER, LOCK	.250 ID CARBON STEEL, CADMIUM PLATED	22
10'	10'	92194	ZIP-41-3	ZIPPER TUBING	ALPHA	21
1	1		6520AA0108-501	COCKPIT EGRESS PLATFORM - IFT		20
2	2		.138-32UNC	NUT, SLF LKG, HX	.138-32UNC CARBON STEEL, CADMIUM PLATED	19
2	2		.138 ID	WASHER, FLAT	.138 ID CARBON STEEL, CADMIUM PLATED	18
2	2		.138-32UNC-2A X .500 L	MSCR, FL, CSKH, 100°, XREC	.138-32UNC-2A X .500 L CARBON STEEL, CADMIUM PLATED	17
1	1		PTH-130	MOUNTING BRACKET, HANDHELD TERMINAL	TWO TECHNOLOGIES, INC	16
4	4		MS20600AD4W3	RIVET, PULL, UNIVERSAL HEAD		15
				DELETED		14
				DELETED		13
				DELETED		12
	1		6520AEA001-502	CABLE INSTALLATION		11
	1		6520AC0001-502	COCKPIT STRUCTURE ASSEMBLY		10
1	1		6520ABP002-501	EMERGENCY EQUIPMENT		9
	1		6520ABH001-501	DYNAMIC SEAT SYSTEM		8
1	1		6520ABE025-501	INSTRUCTOR STATION ASSEMBLY, IFT		7
1	1		6520ABC002-501	NARROW FOV VISUAL SYSTEM INSTL		6
1	1		6520ABA015-003	CB LABEL, AC PWR CONTROLLER		5
1	1		6520ABA015-002	CB LABEL, AC PWR CONTROLLER		4
	1		6520ABA001-502	SIMULATOR POWER DISTRIBUTION		3
	1		6520AA0106-501	IFT IDENTIFICATION PLATE		2
1	1		6520A00230-501	FACILITY POWER INSTALLATION		1
502-501	QTY	CAGE CODE	PART OR IDENTIFYING NO.	NOMENCLATURE OR DESCRIPTION	MATERIAL / SPECIFICATION	FIND NO.

G	H	H	REV	REV STATUS
3	2	1	SHEET	OF SHEETS

ELECTRICAL												UNLESS OTHERWISE SPECIFIED DIMENSIONS ARE IN INCHES DO NOT SCALE DRAWING		CONTRACT NO. F33657-94-C-0006		FlightSafety international Simulation Systems Division 2700 N. Hemlock Circle Broken Arrow, OK 74012							
												THIRD ANGLE PROJECTION											
												TOLERANCES UNLESS OTHERWISE SPECIFIED											
												LINEAR		HOLE DIA.		TOLERANCES							
												XX ± .03		UP TO .250		+ .005							
												.XXX ± .010		.251 THRU .500		+ .006							
														.501 THRU .750		+ .008							
												ANGULAR		.751 THRU 1.000		+ .010							
												± .5<MOD<DEG>		1.001 THRU 1.500		+ .015							
																+ .002							
														FINISH/TREATMENT									

FASTENER CODE
PER NAS 523

XX 4F C

DIA IN 32NDS

MFG HEAD
SIDE

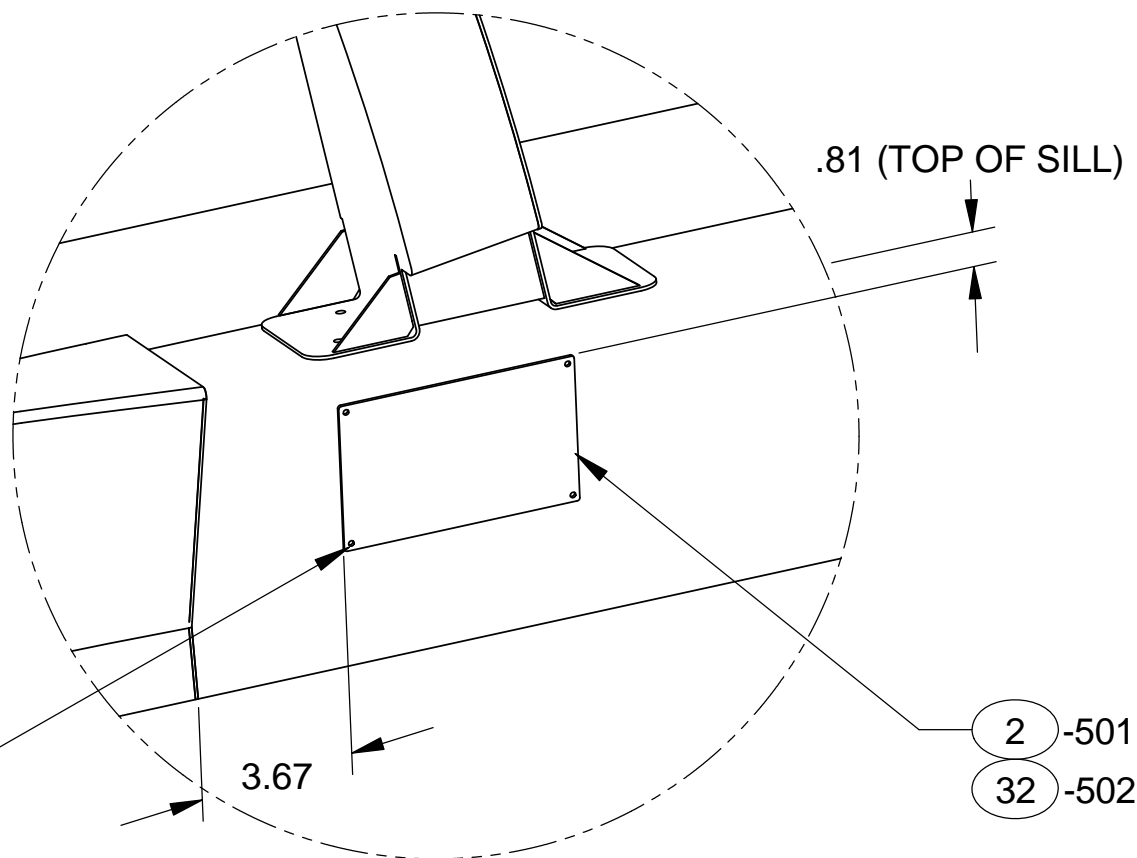
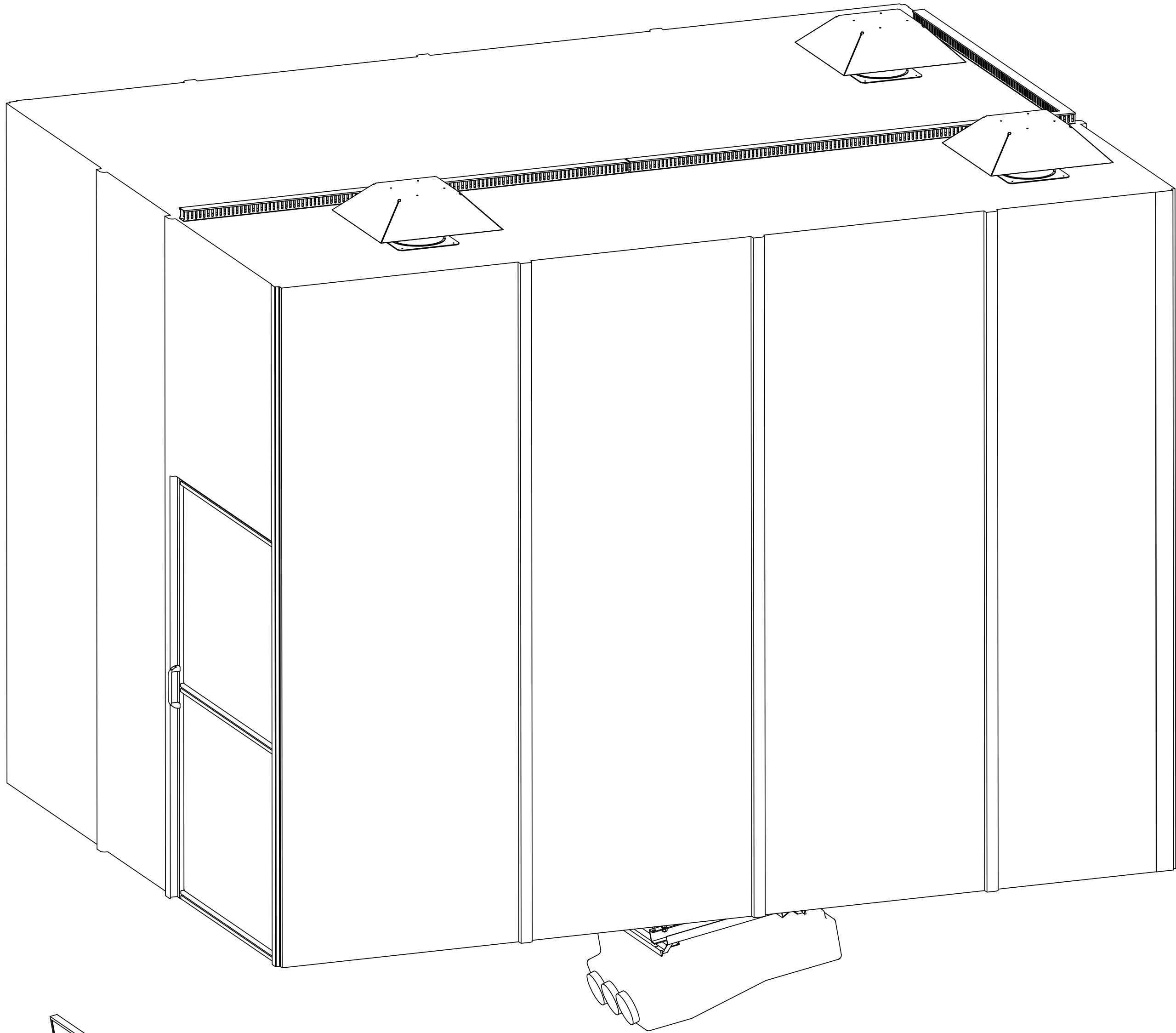
F=FAR SIDE
N=NEAR SIDE

CSK MATL

RIVET CODE

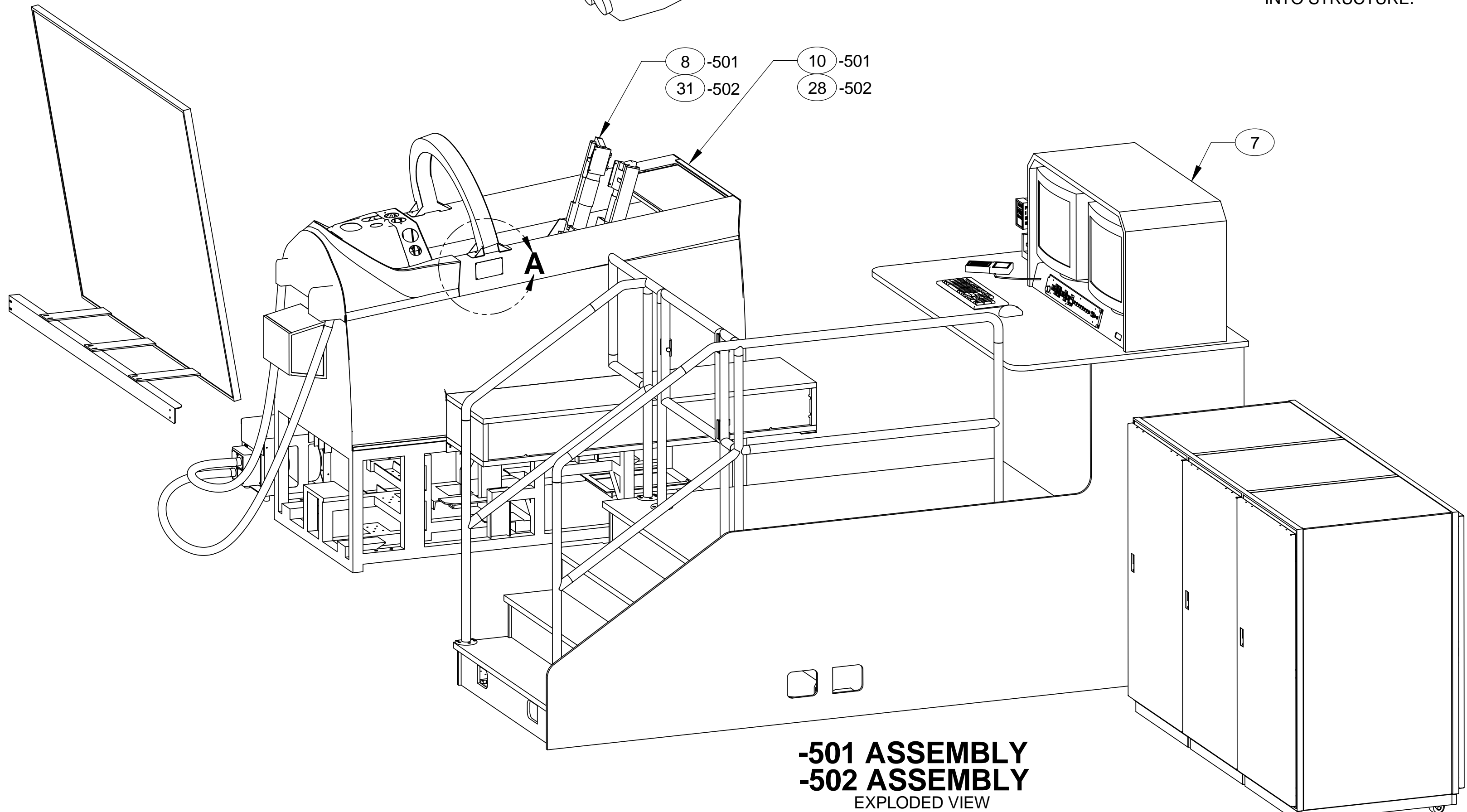
AA=MS20600AD

Tue 2015/03/10 9:32:11 AM Requested by: shead - Not for Production -



USING FIND NO 2
AS A TEMPLATE,
4X Ø .135
INTO STRUCTURE.

DETAIL A
SCALE: 1/4



-501 ASSEMBLY
-502 ASSEMBLY
EXPLODED VIEW

REF	REF	6520AEF001	AREA ALLOCATIONS		33
1		6520AA0106-502	IFT IDENTIFICATION PLATE		32
1		6520ABH001-502	DYNAMIC SEAT SYSTEM		31
1		6520AEA001-505	CABLE INSTALLATION		30
1		6520ABA001-505	SIMULATOR POWER DISTRUBUTION		29
1		6520AC0001-505	COCKPIT STRUCTURE ASSEMBLY		28
1	1	6520AA0005-501	CABLE ROUTING ACTR PWR & ENCD		27
1	43321	TD028-7	FLAT MODULAR CABLE, RJ12 (6X6)	L-COM (ALTERNATE PART NO.)	26
1	02929	06WX8512	CORD SET 6/6 WAY	NEWARK	26
-502-501 CAGE QTY CODE		PART OR IDENTIFYING NO.	NOMENCLATURE OR DESCRIPTION	MATERIAL/SPECIFICATION	FIND NO.

<div>FlightSafety Simulation Systems Division 2700 N. Hancock Circle Broken Arrow, OK 74012</div>					
SIZE		CAGE CODE		DWG. NO.	REV.
DRAWN: S. WEAVER		D 31866		6520AA0002	H
SIMULATOR ASSEMBLY, IFT		SCALE 1/16		SHEET	2

