

DRAWING TECHNICAL NOTICE

<input type="checkbox"/> IDTN	<input checked="" type="checkbox"/> DTN	DATE 15 Nov 2018
CHANGE PREPARED BY Brad Anderson		JOB NO. 6520

**Delaware
Resource
Group**

431 I Street East
Bldg. 738
Randolph AFB, TX 78150

DRAWING NO. 6520AA001	SUFFIX	REV LTR H
DRAWING TITLE Simulator Assembly, OFT		SHEET 1 OF 4

REASON FOR CHANGE

CSO and NFO devices have been upgraded with the Hands On Throttle and Stick (HOTAS) accessory and the associated USB extender used to connect the HOTAS to the IOS computer.

CHANGE CLASS		APPROVALS SEE MUSS TSCO NO.
I		11-186
II	X	

ADD:

I/DTN NO. T0001

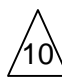
FN 35: 1 IC402A CAT5 USB 2.0 EXTENDER BLACK BOX NETWORK SERVICES

FN 36: 1 2960720 HANDS ON THROTTLE AND STICK THRUSTMASTER

FN 37: 1 6520AEF001 AREA ALLOCATIONS

Locator line for FN35 on SH1 and SH2.

Locator lines for FN36 on SH2.

 USED ONLY FOR HOTAS-CONFIGURED DEVICES. NOT DEPICTED IN THIS DRAWING FOR CLARITY.

"THE LOCAL USB UNIT IS LOCATED NEAR THE IOS COMPUTER." to SH1.

"GENERAL AREA FOR MOUNTING THE REMOTE UNIT" to SH2.

"POSSIBLE LOCATIONS FOR THE HOTAS" to SH2

EFFECTIVITY

All jobs associated with
HOTAS-configured devices.

DISTRIBUTION STATEMENT D

DISTRIBUTION AUTHORIZED TO THE DEPARTMENT OF DEFENSE AND U.S. DoD CONTRACTORS ONLY: (CRITICAL TECHNOLOGY), FEBRUARY 10, 2017. OTHER REQUESTS FOR THIS DOCUMENT SHALL BE REFERRED TO AGILE SUPPORT DIRECTORATE, SIMULATORS DIVISION (AFLCMC/WNS), WRIGHT-PATTERSON AIR FORCE BASE, OHIO 45433-7249

WARNING-This Document contains technical data whose export is restricted by the Arms Export Control Act (Title 22, U.S.C. Sec 2751, et seq.) or the Export Administration Act of 1979, Title 50, U.S.C., App. 2401, et seq.), as amended. Violations of these export laws are subject to severe criminal penalties. Disseminate in accordance with provision of DOD 5230.25.

DESTRUCTION NOTICE-For unclassified, limited documents destroy by any method that will prevent disclosure of contents or recognition of the document.


REMOVE:

Boom crane. It is no longer part of the configuration.

PLANNING NOTE: Addition of new hardware also includes software installation. Inspect packaging to ensure all materials are included before proceeding with installation.

NOTES:

1. APPLICABLE DOCUMENTS:
 - A. FSI-SSD 7.1.1.1-1993
 - B. ANSI Y14.5M-1982
2. INSTALL ALL FASTENERS PER FSI-SSD DOCUMENT 7.1.3.1-6.
3. REMOVE ALL BURRS AND SHARP EDGES
R .02 MAX OR 45 DEG X .02 MAX.

 TWO TECHNOLOGIES, INC.
419 SARGON WAY
HORSHAM, PA 19044
PHONE: 215-441-5305
FAX: 215-441-0423

 LOCATE APPROXIMATELY AS SHOWN.


6 NOT SHOWN: USED TO HOUSE VISUAL CABLES - TO BE INSTALLED ON SITE.

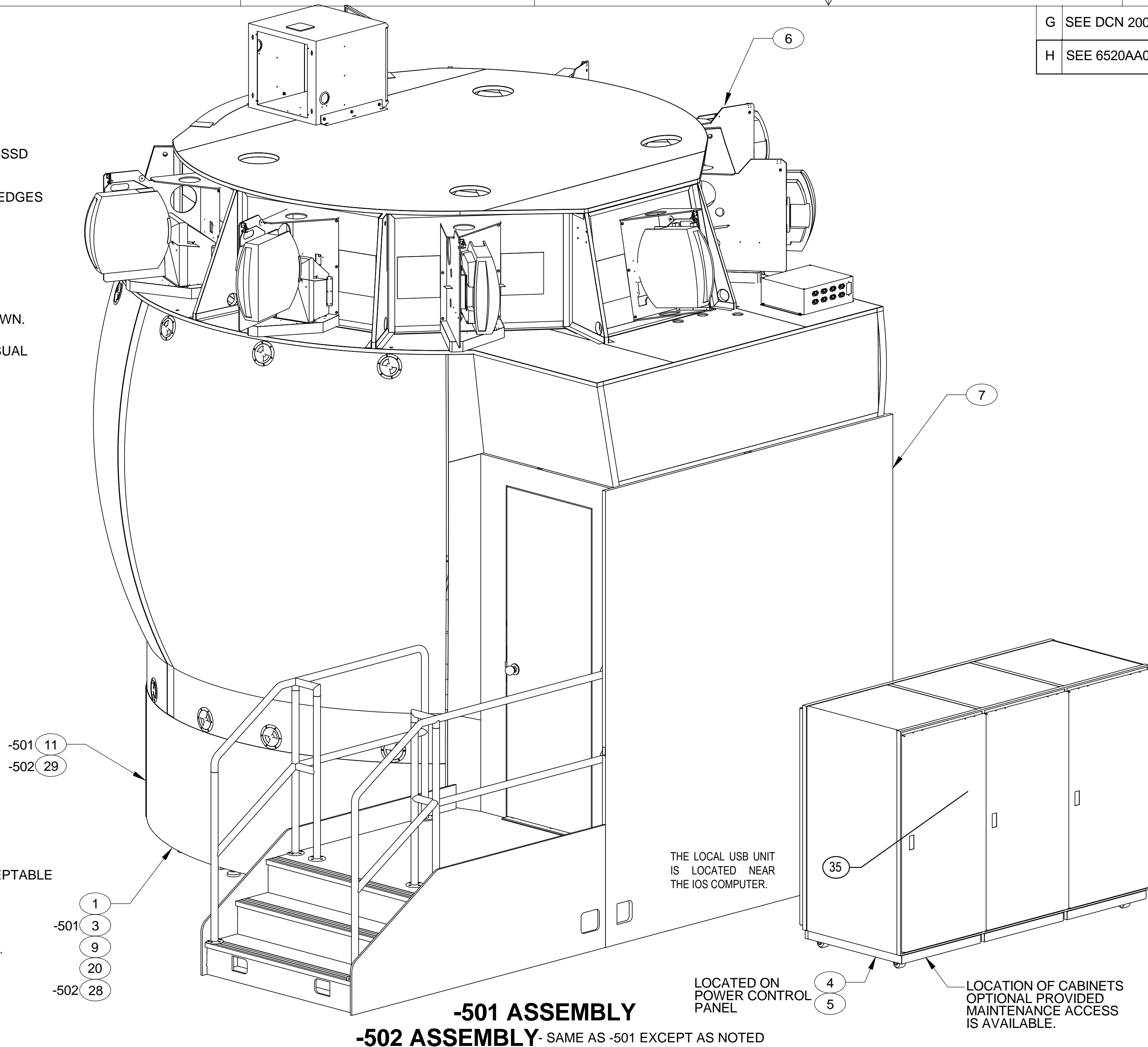
 USED BUT NOT SHOWN.

8. -501 ASSEMBLY INACTIVE FOR FUTURE DESIGN AS OF REV E. TABLE BELOW LISTS OFT'S WITH DRI CONTROLS.
-502 EPRO SYSTEM REPLACES -501 DRI SYSTEM.


Job No.	Serial No.	Control System
6520	001	DRI
6532	004	DRI
6532	005	DRI
6538	010	DRI
6540	012	DRI
6544	015	DRI
6548	018	DRI
6551	021	DRI
6559	026	DRI
6571	031	DRI
6574	033	DRI
6588	040	DRI
6589	041	DRI
6590	042	DRI
6596	045	DRI
6601	046	DRI
6602	047	DRI
6603	048	DRI

9 EITHER VISUAL SYSTEM IS ACCEPTABLE
FOR USE, ONLY 1 REQUIRED.

 USED ONLY FOR HOTAS-CONFIGURED DEVICES. NOT DEPICTED FOR CLARITY.




PARTS LIST CONT. SHEET 2

1		43321	TDC028-7	FLAT MODULAR CABLE, RJ12 (6X6)	L-COM (ALTERNATE PART NO.)	25
1		43321	6WX8512	CORD SET 6/6 WAY	NEWARK	25
1	1	02929	06WX8493	SOCKET, SURFACE 6/6 WAY	NEWARK	24
1	1	39428	7598A23	FOAM TAPE	MCMMASTER-CARR	23
3	3	06383	C4LG6	COVER	PANDUIT	22
3	3	06383	FS4X4LG6NM	DUCT	PANDUIT	21
1	1	39428	80135T46	STEP STOOL	MCMMASTER CARR	20
2	2		.138-32UNC	NUT, SLF LKG, HX		19
2	2		.138 ID	WASHER, FLAT		18
2	2		.138-32UNC-2A X .500 L	MSCR, FL, CSKH, 100°, XREC	.138-32UNC-2A X .500 L CARBON STEEL, CADMIUM PLATED	17
1	1		PTH-130	MOUNTING BRACKET, HANDHELD TERMINAL	TWO TECHNOLOGIES, INC	16
4	4		MS20600AD4W3	RIVET, PULL, UNIVERSAL HEAD		15
			DELETED			14
			DELETED			13
			DELETED			12
	1		6520AEA001-501	CABLE INSTALLATION		11
	1		6520AC0001-501	COCKPIT STRUCTURE ASSEMBLY		10
1	1		6520ABP001-501	EMERGENCY EQUIPMENT		9
	1		6520ABH001-501	DYNAMIC SEAT SYSTEM		8
1	1		6520ABE001-501	INSTRUCTOR STATION ASSEMBLY		7
1	1		6686ABC001-501	VISUAL SYSTEM INSTALLATION		6
1	1		6520ABA015-002	CB LABEL, AC PWR CONTROLLER		5
1	1		6520ABA015-001	CB LABEL, AC PWR CONTROLLER		4
	1		6520ABA001-501	SIMULATOR POWER DISTRIBUTION		3
	1		6520AA0105-501	OFT IDENTIFICATION PLATE		2
1	1		6520A00130-501	FACILITY POWER INSTALLATION		1
-502-501	QTY	CAGE CODE	PART OR IDENTIFYING NO.	NOMENCLATURE OR DESCRIPTION	MATERIAL / SPECIFICATION	FIND NO.

E	G	G	REV	REV STATUS
3	2	1	SHEET	OF SHEETS

[illegible]

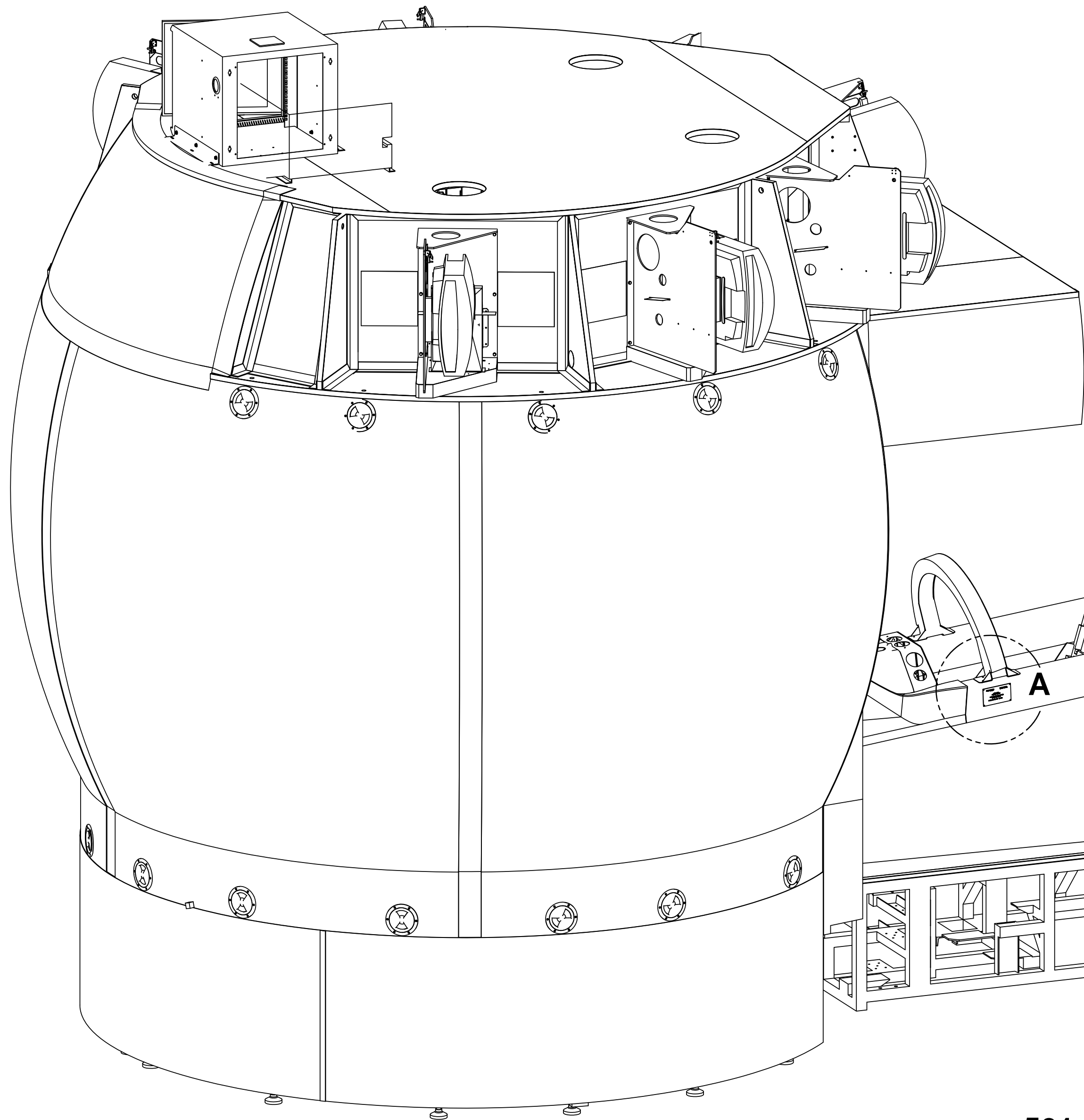
		UNLESS OTHERWISE SPECIFIED DIMENSIONS ARE IN INCHES DO NOT SCALE DRAWING
THIRD ANGLE PROJECTION		
TOLERANCES UNLESS OTHERWISE SPECIFIED:		
LINEAR	HOLE DIA	TOLERANCE
.XX = .03	UP TO .250	+.005 -.001
.XXX = .010	.251 THRU .500	+.005 -.001
	.501 THRU .750	+.008 -.001
ANGULAR	.751 THRU 1.000	+.010 -.001
= .5<MOD-DEG>	1.001 AND OVER	+.015 -.002
FINISH/TREATMENT		
SIMILAR TO		

CONTRACT NO.	
F33657-94-C-0006	
APPROVALS	DATE
DRAWN S. WEAVER	2000/03/17
CHECKED J. MOREY	2000/03/17
DESIGN S. WEAVER	2000/03/17
DESIGN ACTIVITY J. BARRON	2000/03/17

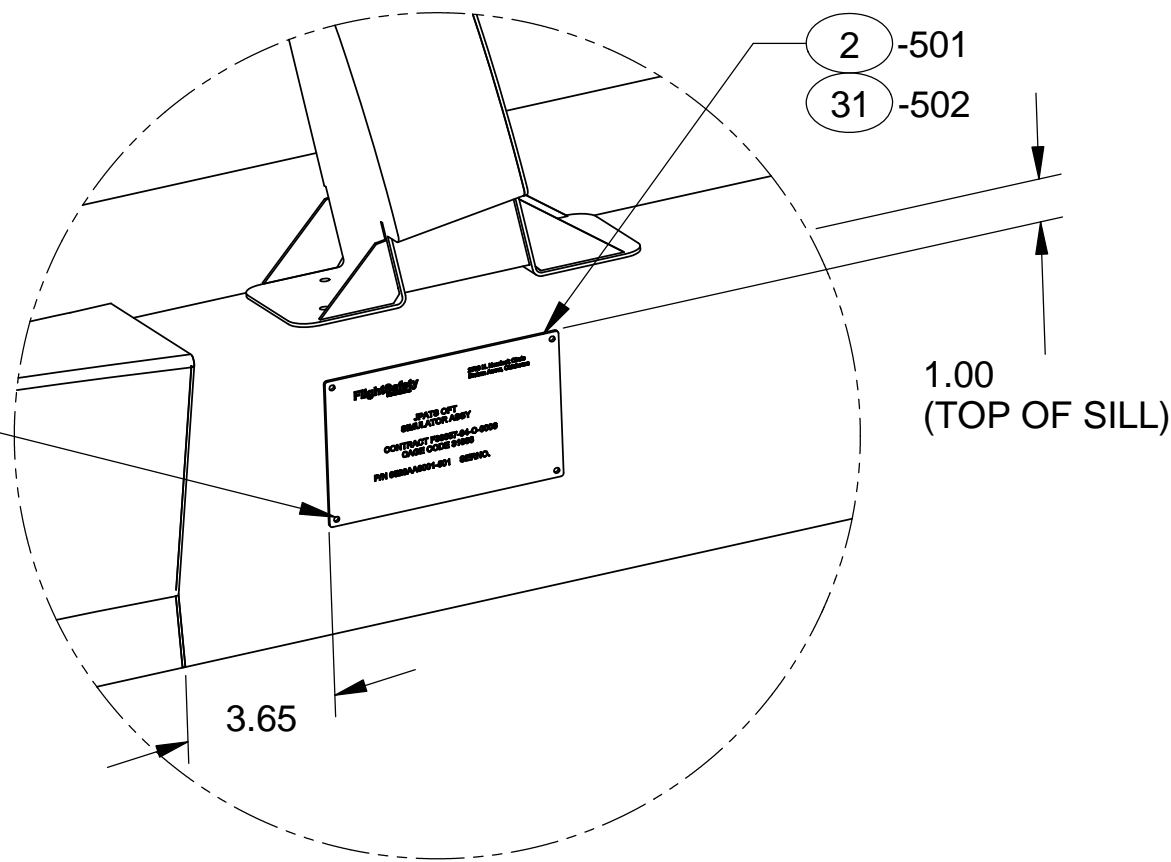
<h1>FlightSafety</h1> <p>international</p>		<p>Simulation Systems Division 2700 N. Hemlock Circle Broken Arrow, OK 74012</p>	
<p>TITLE</p> <h2>SIMULATOR ASSEMBLY, OFT</h2>			
<p>SIZE</p> <p>D </p>	<p>CAGE CODE</p> <p>31866 </p>	<p>DWG. NO.</p> <p>6520AA0001 </p>	<p>REV.</p> <p>H </p>
<p>SCALE</p> <p>1/16 </p>	<p>SHEET</p> <p>1 of 3 </p>		

FASTENER CODE PER NAS 523		DIA IN 32NDS		RIVET CODE BLOCK	
	XX		4F		
	C				AA=MS20600AD

Tue 2015/03/10 9:11:34 AM Requested by: shead - Not for Production -



**-501 ASSEMBLY
-502 ASSEMBLY**
3D EXPLODED VIEW



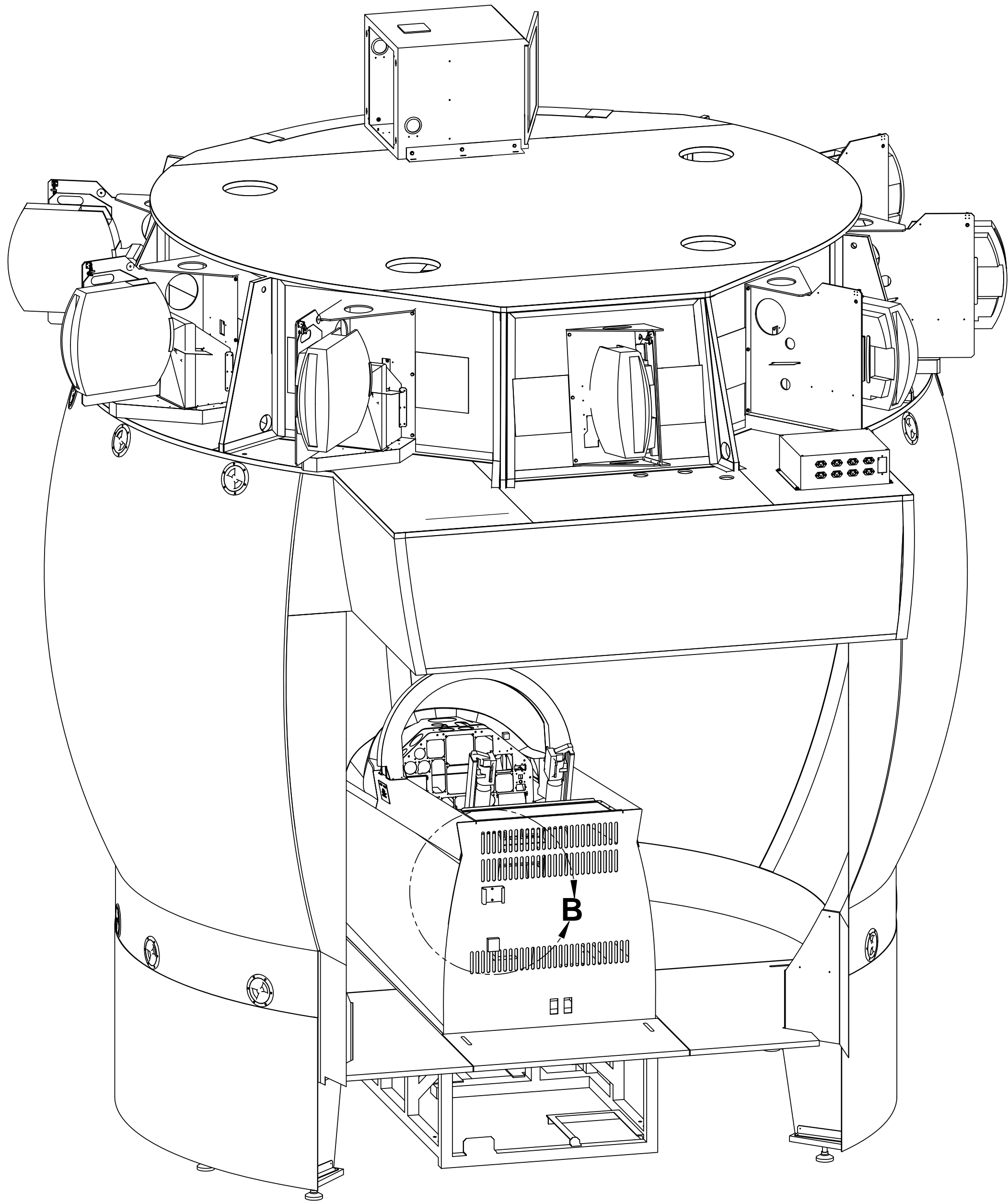
DETAIL A
SCALE: 1/4

10		1		2960720	HANDS ON THROTTLE AND STICK	THRUSTMASTER	36	
	10		1		IC402A	CAT5 USB 2.0 EXTENDER	BLACK BOX NETWORK SERVICES	35
7	9	1	1		H03G0081	TOP LEVEL ASSY, VITAL 1100, HD VISUAL SYS.	FLIGHTSAFETY VSS	34
7	9	1	1		H003G0080	TOP LEVEL ASSY, VITAL-X, HD VISUAL SYS.	FLIGHTSAFETY VSS	33
7	REF	REF			6520AEF001	AREA ALLOCATIONS		32
	1				6520AA0105-502	OFT IDENTIFICATION PLATE		31
	1				6520ABH001-502	DYNAMIC SEAT SYSTEM		30
	1				6520AEA001-504	CABLE INSTALLATION		29
	1				6520ABA001-504	SIMULATOR POWER DISTRIBUTION		28
	1				6520AC0001-504	COCKPIT STRUCTURE ASSEMBLY		27
37	1	1			6520AA0005-501	CABLE ROUTING-ACTUATOR PWR & ENCD		26
IND NO.	-502	-501	CAGE QTY CODE	PART OR IDENTIFYING NO.	NOMENCLATURE OR DESCRIPTION	MATERIAL/SPECIFICATION	FIND NO.	

	1		6520AEF001	AREA ALLOCATIONS		37
-502	-501	CAGE QTY CODE	PART OR IDENTIFYING NO.	NOMENCLATURE OR DESCRIPTION	MATERIAL/SPECIFICATION	FIND NO.

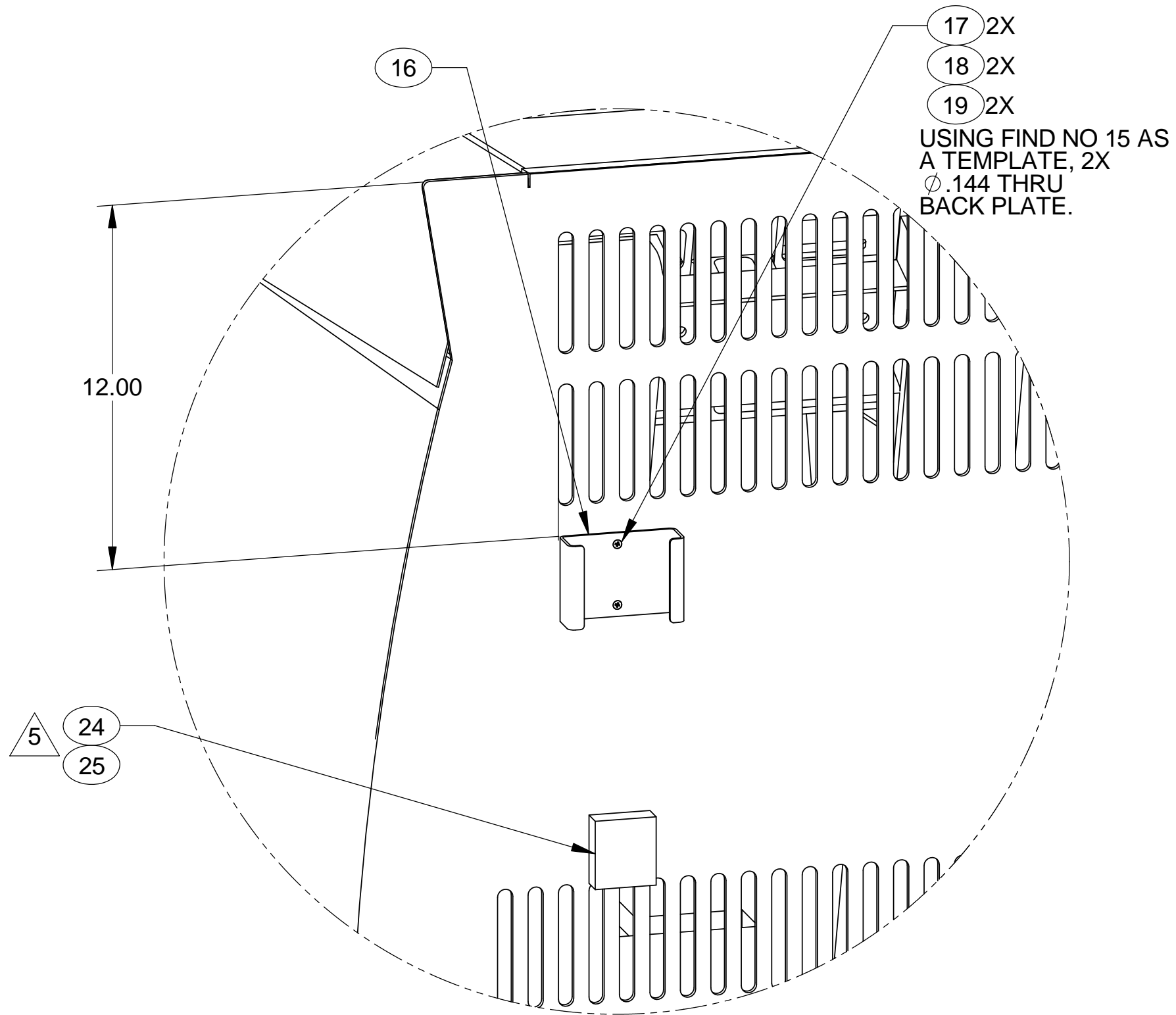
FlightSafety <small>Simulation Systems Division 2700 N. Hancock Circle Broken Arrow, OK 74012</small>		SIZE D 31866	CAGE CODE 6520AA0001	DWG. NO. 2	REV. H
DRAWN: S. WEAVER <small>SIMULATOR ASSEMBLY, OFT</small>		SCALE: 1/16		SHEET 2	

Tue 2015/03/10 9:11:34 AM Requested by: shead - Not for Production -



-501 ASSEMBLY
-502 ASSEMBLY
3D VIEW

INSTRUCTOR STATION AND EQUIPMENT
CABINETS OMITTED FOR CLARITY



DETAIL B
SCALE: 1/4